



Workshop for Early Childhood Development Centres

October 29, 2012

Nicole Gervais, Executive Director
Early Childhood Development
Education and Early Childhood Development



The Purpose

- To demonstrate integrated programming as an effective delivery model for early childhood services and supports to parents
- To achieve sustainably by the end of the demonstration phase
- To inform public policy in the delivery of early childhood programs





Early Childhood Development Centres

- Strengthen community capacity to support families and young children
- \$400,000 annually for 3-yr pilot of 4 demonstration sites, 2009 – 2012
- 3 government departments participated – Education and Early Childhood Development (lead), Health, and Healthy and Inclusive Communities



Early Childhood Development Centres

- In 2009, a partnership was developed between the province and the MWMFF.
- MWMFF provided a \$300,000 grant to evaluate the demonstration sites.
- Health and Education Research Group (HERG) based out of University of UNB and l'Université de Moncton, conducted the evaluation.
- The third evaluation report will be launched in a few months.



Early Childhood Development Centres

- Led by non-profit community networks
- Integration of existing community services under one roof for seamless programming for children and parents
- Services include:
 - full and part-time child care,
 - parental support programming,
 - and other services based on community need (e.g. toy & resource lending libraries, immunization clinics, healthy lifestyle programs)



Early Childhood Development Centres

| ECDC | Schools |
|--|---|
| Saint John Early Learning Centre | St. John the Baptist / King Edward School |
| Le Phare familial | Sainte-Bernadette |
| Step Ahead-Bath Family Learning Centre | Bath Middle School |
| Centre de la petite enfance de Robertville | La Croisée |



Early Childhood Development Centres

Sites supported by the MWMFF

| CDPE | Schools |
|---|--------------------------------|
| Future Footprints Family Centre | Andover Elementary School |
| Smart Start | Keswick Valley Memorial School |
| Cougar Kitten's Family Centre | Centreville Community School |
| Millville | pas en service |
| Centre de la petite enfance La Boussole | Soleil Levant |



Putting Children First

Positioning Early Childhood for the Future

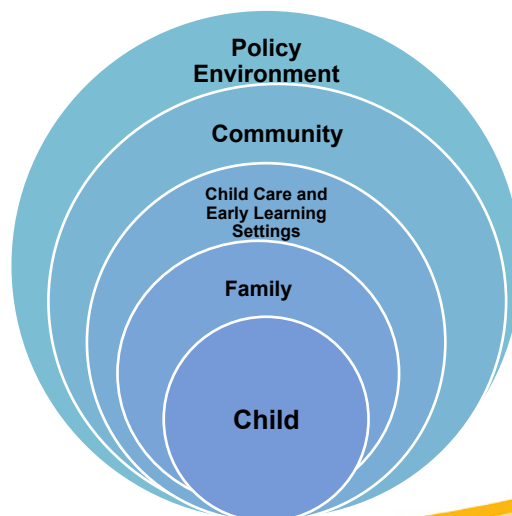
A three year action plan launched in June



Integration of Early Childhood Services and/ within Education

- Creating a continuum of learning from birth that is more robust, with greater policy coherence with increased supports to families and young children
- Efficient and effective utilisation of resources to maximise the impact and outcomes
- Commitment on integration by all partners

Positioning Early Childhood for the Future



Management Structure to Support Integration

- Establishment of networks of early childhood services – provincial and local levels attached to the new school districts
- Managed by Directors Early Childhood Services
- Responsible for management of early childhood programs and services
- Develop community linkages, engage partners, and provide leadership

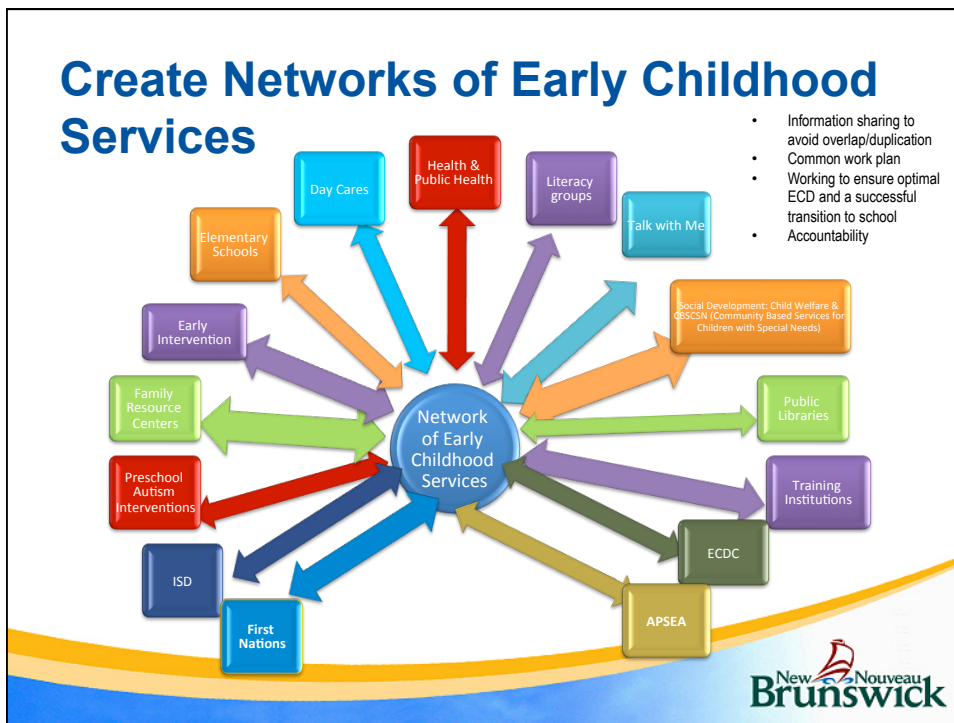


Integrated interventions

Networks will be the venue to merge early childhood services and school services to support a successful transition to school by:

- Expanding early childhood to include children up to the age of 8 (end of grade 2)
- Removing barriers to service delivery, by simplifying the process
- No wrong door for parents to access services
- Providing earlier diagnosis of children's health and development problems
- Increasing on the range of services and supports offered to vulnerable children and their families





% of children in childcare

| District | Total 0-12 years Percent Coverage | Percent Coverage Preschool (2-4) |
|--------------------|--------------------------------------|-------------------------------------|
| ASD-E | 26.16 | 49.80 |
| ASD-N | 12.78 | 26.90 |
| ASD-S | 18.96 | 39.31 |
| ASD-W | 19.13 | 37.64 |
| <i>Anglophone</i> | <i>19.82</i> | <i>39.53</i> |
| DSF-NO | 26.98 | 38.68 |
| DSF-NE | 28.11 | 51.91 |
| DSF-S | 35.13 | 59.71 |
| <i>Francophone</i> | <i>31.02</i> | <i>52.84</i> |
| Total | 23.04 | 43.35 |

New Brunswick

Moving Commitments into Action

- The Ministerial Advisory Committee on Early Learning and Child Care provided recommendations on how to best implement the platform commitments
 - Consultations occurred with key stakeholders in September 2011



QUALITY

- Development of a 90 hour *"Introduction to Early Childhood Education Course"* – starting in 2012 & full implementation by 2014
- Continue the design of an ECE Certification Model in collaboration with Early Childhood Care and Education New Brunswick
- Maintain the ELCC Trust Fund tuition reimbursement program for individuals completing their ECE Certificate.
- Raising the current \$4.50/hour for trained staff to \$5.00/hour by 2014-2015; beginning April 2013.



AFFORDABILITY

- Phasing in increases to:
 - the income level at which a family benefits from full child care subsidy, over the next three (3) years, from \$22,000 to \$30,000.
 - the upper household annual income threshold, over the next three (3) years, from \$40,000 to \$55,000
- Reducing the gap between the childcare fees and the available subsidy by increasing the daily childcare parent subsidy rate:

| | 2012-2013 | 2013-2014 | 2014-2015 | Cumulative over 3 years |
|-----------|-----------|-----------|-----------|-------------------------|
| Infants | \$2.00 | \$1.00 | \$1.00 | \$4.00 |
| Preschool | \$0.75 | \$0.50 | \$0.50 | \$1.75 |

ACCESSIBILITY

- Investments of over \$9 million dollars over the next three years to support the creation of new child care spaces
 - 9,300 new spaces over the next three (3) years, including 550 infant spaces
 - increasing the incentive grant for rural child care by \$500 per facility, from the current \$5000 per centre and \$3000 per community day care home
 - development of a strategy to encourage employers to provide on-site child care services for their employees. 2012-2013

INCLUSION

- Community-Based Inclusion Facilitation project will focus on building capacity for successful inclusion of children with additional needs in regulated early learning and child care facilities. Over three years, beginning in 2012-13
- Over two years, invest additional dollars to support a total of 50 more spaces for children with special needs to participate in early learning and child care facility, while their parents are at work – beginning in 2013-14



Together, we can succeed!

